

## Active Ral

**Catalog Number:** 26913

**Gene Symbol:** RAL

**Description:** Anti-Active Ral Mouse Monoclonal Antibody

**Background:** The Ras-like small G proteins, RalA and RalB, are important components of Ras signaling pathways, implicated in the initiation and maintenance of tumorigenic transformation, as well as vesicle transport, apoptosis, transcription, cell migration, and cell proliferation.

**Immunogen:** Recombinant full length protein of active RalB.

**Tested applications:** IP, IHC

**Recommended dilutions:**

1 µg for 1~2 mg total cellular proteins for IP;

1:100 dilution for IHC

**Concentration:** 1 mg/ml

**Host:** mouse

**Clonality:** Monoclonal

**Isotype:** IgG

**Purity:** Purified from ascites

**Format:** Liquid

**Storage buffer:**

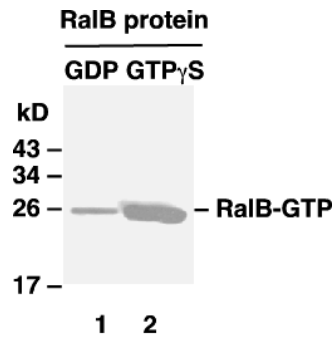
Preservative: no

Constituents: PBS (without Mg<sup>2+</sup> and Ca<sup>2+</sup>), pH 7.4, 150 mM NaCl, 50% glycerol

**Species Reactivity:** Anti-active Ral antibody recognizes active RalA and RalB of vertebrates.

**Storage Conditions:** Store at -20°C. Avoid freeze / thaw cycles

## Immunoprecipitation/Western blot



**IP:** anti-active Ral mAb

**WB:** anti-RalB pAb

Ral activation assay. Purified RalB proteins were immunoprecipitated after treated with GDP (lane 1) or GTP $\gamma$ S (lane 2). Immunoprecipitation was done with the anti-active Ral monoclonal antibody (Cat. No. 26913). Immunoblot was with an anti-RalB rabbit polyclonal antibody (Cat. No. 21033).

For research use only. Not for diagnostic or therapeutic applications.