

## Active G $\alpha_i$

**Catalog Number:** 26901

**Gene Symbol:** Gnai

**Description:** G $\alpha_i$  Mouse Monoclonal Antibody

**Background:** Heterotrimeric G proteins are critical cellular signal transducers. G $\alpha_i$  represents one sub-family of G proteins that could mediate the inhibition of adenylyl cyclases. Other biochemical and physiological functions of G $\alpha_i$  proteins are being explored.

**Immunogen:** Recombinant full length protein of G $\alpha_{i1}$

**Tested applications:** ELISA, WB, IHC

**Recommended dilutions:**

ELISA 1:1000-1:5000,

WB 1:1000-1:2000,

**Host:** mouse

**Clonality:** Monoclonal

**Isotype:** IgG

**Purity:** Purified from ascites

**Format:** Liquid

**Storage buffer:**

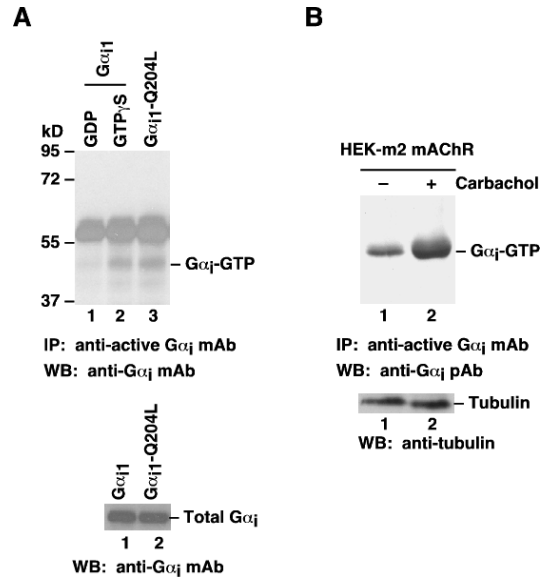
Preservative: no

Constituents: PBS (without Mg<sup>2+</sup> and Ca<sup>2+</sup>), pH 7.4, 150 mM NaCl, 50% glycerol

**Species Reactivity:** Active G $\alpha_i$  antibody recognizes active G $\alpha_{i1}$ , G $\alpha_{i2}$ , and G $\alpha_{i3}$  of vertebrates.

**Storage Conditions:** Store at -20°C. Avoid freeze / thaw cycles

## Immunoprecipitation/Western blot



**G $\alpha_i$  activation assay.** **A.** CHO cells were transfected with wild-type G $\alpha_{i1}$  (lanes 1 and 2) or constitutively active G $\alpha_{i1}$ -Q204L (lane 3). Cell lysates were treated with GDP (lane 1) or GTP $\gamma$ S (lane 3). Lysates were then incubated with an anti-active G $\alpha_i$  monoclonal antibody (Cat. No. 26901) (top panel). The precipitated active G $\alpha_i$  was immunoblotted with an anti-G $\alpha_i$  monoclonal antibody (Cat. No. 26003). The bottom panel shows the Western blot with anti-G $\alpha_i$  monoclonal antibody (Cat.No. 26003) of the cell lysates. **B.** HEK293 cells stably expressing human m2 mAChR were treated with (lane 2) or without (lane 1) carbachol. Cell lysates were then incubated with an anti-active G $\alpha_i$  monoclonal antibody (Cat. No. 26901) (top panel). The precipitated active G $\alpha_i$  was immunoblotted with an anti-G $\alpha_i$  rabbit polyclonal antibody (Cat. No. 21006). The bottom panel shows the Western blot with anti-tubulin of the cell lysates..

For research use only. Not for diagnostic or therapeutic applications.