

Active Cdc42

Catalog Number: 26905

Gene Symbol: CDC42

Description: Anti-Active Cdc42 Mouse Monoclonal Antibody

Background: Small GTPases are a super-family of cellular signaling regulators. Cdc42 belongs to the Rho sub-family of GTPases that regulate cell motility, cell division, and gene transcription. GTP binding increases the activity of Cdc42, and the hydrolysis of GTP to GDP renders it inactive. GTP hydrolysis is aided by GTPase activating proteins (GAPs), while exchange of GDP for GTP is facilitated by guanine nucleotide exchange factors (GEFs).

Immunogen: Recombinant full length protein of active Cdc42

Tested applications: IP, IHC

Recommended dilutions:

1 µg for 1~2 mg total cellular proteins

Concentration: 1 mg/ml

Host: mouse

Clonality: Monoclonal

Isotype: IgG

Purity: Purified from ascites

Format: Liquid

Storage buffer:

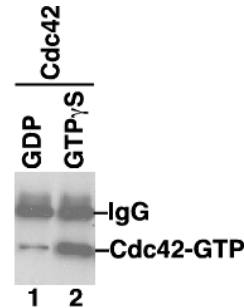
Preservative: no

Constituents: PBS (without Mg²⁺ and Ca²⁺), pH 7.4, 150 mM NaCl, 50% glycerol

Species Reactivity: Anti-active Cdc42 antibody recognizes active Cdc42 from vertebrates.

Storage Conditions: Store at -20°C. Avoid freeze / thaw cycles

Immunoprecipitation and Western blot:



IP: anti-active Cdc42 mAb

WB: anti-Cdc42 mAb

IP/WB analysis of active Cdc42 protein. Purified recombinant Cdc42 proteins were loaded with GDP (lane 1) or GTPγS (lane 2). These proteins were immunoprecipitated with anti-active Cdc42 mouse monoclonal antibody (Cat. # 26905). After SDS/PAGE, the membrane filter was probed with anti-Cdc42 mouse monoclonal antibody (Cat. # 26008).

For research use only. Not for diagnostic or therapeutic applications.