

Ras(G12D)

Catalog Number: 26036

Gene Symbol: RAS (G12D)

Description: Anti-Ras(G12D) Mouse Monoclonal Antibody

Background: Ras (G12D) is one type of Ras missense mutations at the codon 12. Ras protein is a membrane-associated GTPase that regulates cell proliferation, differentiation, and survival. Ras G12D mutation results in decreased GTPase activity and constitutive signaling. This mutation is found in many types of human cancers.

Immunogen: A synthetic peptide from the internal region of Ras which includes the mutation of G12D, human origin.

Tested applications: ELISA, WB, IF, IHC

Recommended dilutions:

ELISA 1:100-1:3000

WB 1:200-1:1000

IF 1:50-1:100

IHC 1:10-1:100

Concentration: 1 mg/ml

Host: mouse

Clonality: Monoclonal

Isotype: IgG2a

Purity: Purified from ascites

Format: Liquid

Storage buffer:

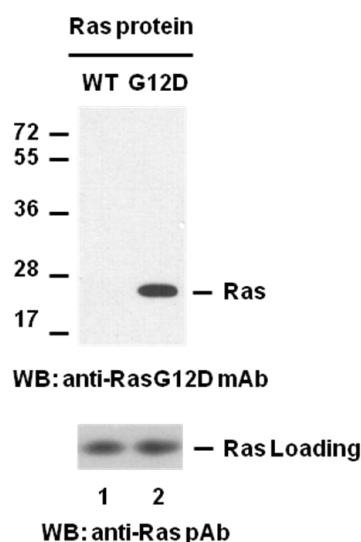
Preservative: no

Constituents: PBS (without Mg²⁺ and Ca²⁺), pH 7.4, 150 mM NaCl, 50% glycerol

Species Reactivity: Ras(G12D) antibody recognizes Ras(G12D) proteins of vertebrates.

Storage Conditions: Store at -20°C. Avoid freeze / thaw cycles

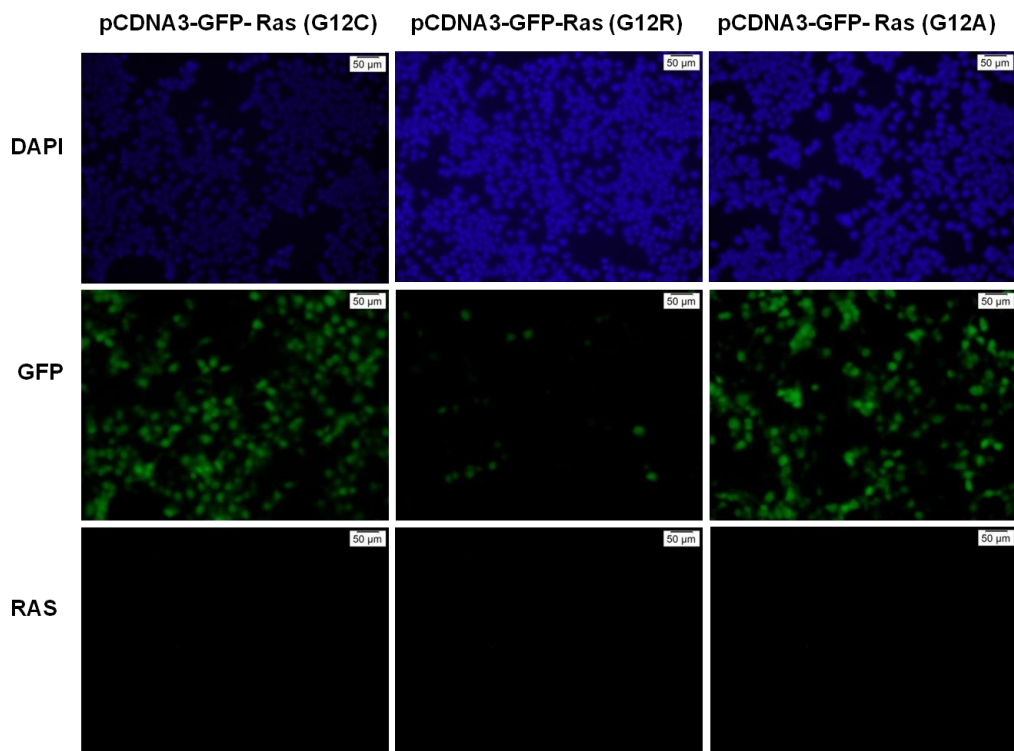
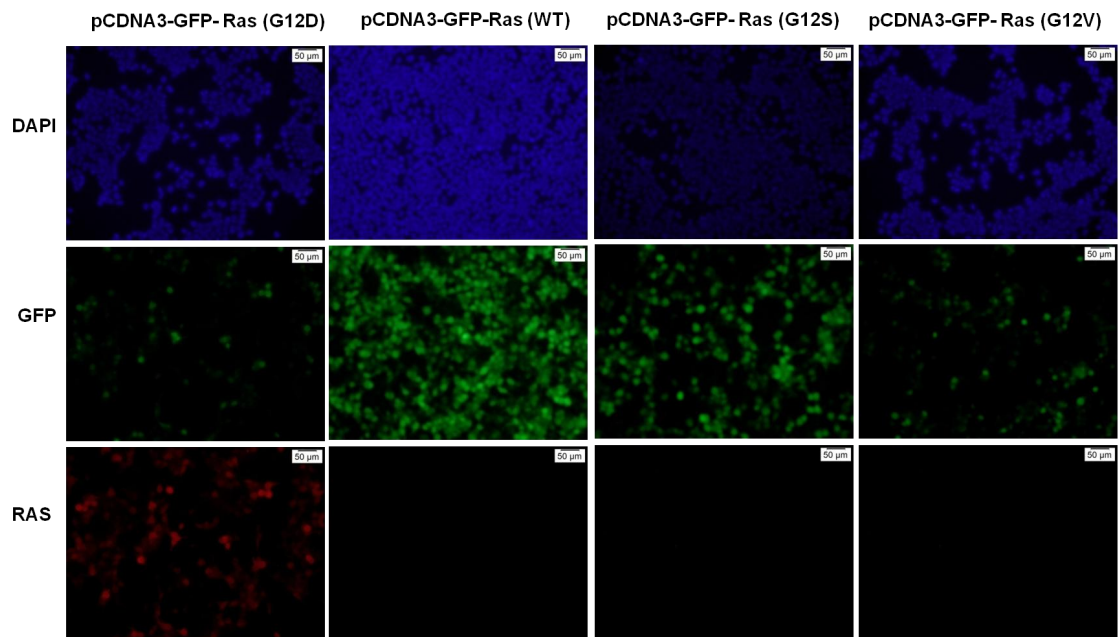
Western blot:



Western blot analysis of recombinant Ras WT and G12D proteins. Equal amounts of purified Ras WT (lane 1, Cat # 10172) and G12D (lane 2, Cat # 10154) proteins were loaded and blotted with anti-Ras G12D mouse monoclonal antibody (Cat # 26036) (Top panel). Input control (bottom panel) was blotted with rabbit polyclonal anti-Ras antibody (Cat # 21021).

For research use only. Not for diagnostic or therapeutic applications.

Immunofluorescence:



Immunofluorescence of cells expressing RAS proteins with anti-RAS (G12D) antibody. HEK293T cells were transfected with pCDNA3-GFP-Ras(G12D) plasmid, pCDNA3-GFP-Ras(WT)plasmid,pCDNA3-GFP-Ras(G12S) plasmid, pCDNA3-GFP-Ras(G12V)plasmid,pCDNA3-GFP-Ras(G12C)plasmid, pCDNA3-GFP-Ras(G12R)plasmid,or pCDNA3-GFP-Ras(G12A)plasmid,

then fixed and stained with anti-Ras(G12D) monoclonal antibody (Cat. # 26036).