

Rab11

Catalog Number: 26030

Gene Symbol: RAB11

Description: Anti-Rab11 Mouse Monoclonal Antibody

Background: Small GTPases of the Rab-family are crucial elements of the machinery that controls membrane traffic. Rab11 has been shown to control traffic through the recycling endosome.

Immunogen: Recombinant full-length protein of Rab11A.

Tested applications: ELISA, WB, IHC, IP

Recommended dilutions:

ELISA 1:100-1:5000

WB 1:100-1:1000

IHC 1:50-1:100

Concentration: 1 mg/ml

Host: mouse

Clonality: Monoclonal

Isotype: IgG

Purity: Purified from ascites

Format: Liquid

Storage buffer:

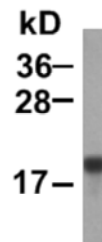
Preservative: no

Constituents: PBS (without Mg²⁺ and Ca²⁺), pH 7.4, 150 mM NaCl, 50% glycerol

Species Reactivity: Rab11 antibody recognizes Rab11 proteins of vertebrates.

Storage Conditions: Store at -20°C. Avoid freeze / thaw cycles

Western blot:



WB: anti-Rab11 mAb

Western blot analysis of recombinant Rab11A proteins (Cat# 26030).

For research use only. Not for diagnostic or therapeutic applications.