

## Arf6

**Catalog Number:** 26029

**Gene Symbol:** ARF6

**Description:** Anti-Arf6 Mouse Monoclonal Antibody

**Background:** ARF6 (ADP-ribosylation factor 6) is a member of the ARF super-family. ARF genes encode small GTPases that increase the ADP-ribosyltransferase activity of cholera toxin and are critical for vesicular trafficking as activators of phospholipase D. Arf6 regulates membrane trafficking and the actin cytoskeleton at the plasma membrane and functions as a regulatory molecule of phagocytosis.

**Immunogen:** Recombinant full length protein of Arf6.

**Tested applications:** ELISA, WB, IHC, IP

**Recommended dilutions:**

ELISA 1:100-1:5000

WB 1:100-1:1000

IHC 1:100-1:1000

**Concentration:** 1 mg/ml

**Host:** mouse

**Clonality:** Monoclonal

**Isotype:** IgG

**Purity:** Purified from ascites

**Format:** Liquid

**Storage buffer:**

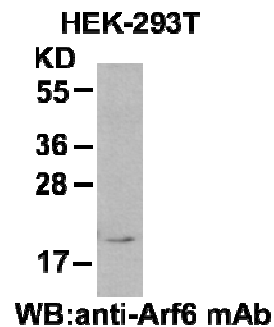
Preservative: no

Constituents: PBS (without Mg<sup>2+</sup> and Ca<sup>2+</sup>), pH 7.4, 150 mM NaCl, 50% glycerol

**Species Reactivity:** Arf6 antibody recognizes Arf6 of vertebrates.

**Storage Conditions:** Store at -20°C. Avoid freeze / thaw cycles

### Western blot:



HEK-293 whole-cell lysate was used for western blot (Cat# 26029).

**For research use only. Not for diagnostic or therapeutic applications.**