

Rab5

Catalog Number: 21151

Gene Symbol: RAB5

Description: Anti-Rab5 Rabbit Polyclonal Antibody

Background: Rab5, consists of three isoforms, Rab5A, Rab5B, and Rab5C, is a small GTPase that is localized to early endosomes. It regulates the fusion between endocytic vesicles and early endosomes, as well as the homotypic fusion between early endosomes.

Immunogen: Three synthetic peptides from the internal region of human Rab5A, Rab5B and Rab5C proteins, respectively

Tested applications: ELISA, WB, IHC, IP

Recommended dilutions:

ELISA 1:100-1:5000

WB 1:100-1:2000

IHC 1:100-1000

Concentration: 0.2 mg/ml

Host: Rabbit

Clonality: Polyclonal

Purity: Purified from serum

Format: Liquid

Storage buffer:

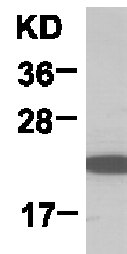
Preservative: no

Constituents: PBS (without Mg²⁺ and Ca²⁺), pH 7.4, 150 mM NaCl, 50% glycerol

Species Reactivity: Rab5 antibody recognizes Rab5A, Rab5B and Rab5C from vertebrates.

Storage Conditions: Store at -20°C. Avoid freeze / thaw cycles

Western blot:



WB: anti-Rab5 pAb

HEK-293T cell lysate was used for Western blot with anti-Rab5 polyclonal antibody (cat # 21151).

For research use only. Not for diagnostic or therapeutic applications.