

RhoA

Catalog Number: 21017

Gene Symbol: RHOA

Description: Anti-RhoA Rabbit Polyclonal Antibody

Background: Small GTPases are a super-family of cellular signaling regulators. RhoA belongs to the Rho sub-family of GTPases. Rho proteins play critical roles in many actin cytoskeleton-dependent processes including platelet aggregation, cell motility, contraction, and cytokinesis. It regulates the formation of stress fibers and focal adhesions in fibroblasts and Ca²⁺ sensitivity of smooth muscle contraction.

Immunogen: A synthetic peptide from the C-terminal region of RhoA.

Tested applications: ELISA, WB, IHC, IP

Recommended dilutions:

ELISA 1:100-1:5000

WB 1:100-1:2000

IHC 1:10-1:100

Concentration: 0.2 mg/ml

Host: Rabbit

Clonality: Polyclonal

Purity: Purified from serum

Format: Liquid

Storage buffer:

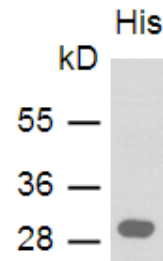
Preservative: no

Constituents: PBS (without Mg²⁺ and Ca²⁺), pH 7.4, 150 mM NaCl, 50% glycerol

Species Reactivity: RhoA antibody recognizes RhoA from vertebrates.

Storage Conditions: Store at -20°C. Avoid freeze / thaw cycles

Western blot:



WB:anti-RhoA pAb

Western blot analysis of RhoA proteins. Purified recombinant His-RhoA protein was used for western blot with the anti-RhoA rabbit polyclonal antibody (Cat. # 21017).

For research use only. Not for diagnostic or therapeutic applications.

24 Whitewoods Lane, Malvern, PA 19355

E-mail: sale@neweastbio.com

Tel: (610) 585-8761 FAX: (610) 578-0821

Web: www.neweastbio.com