

## RhoA

**Catalog Number:** 26007

**Gene Symbol:** RHOA

**Description:** Anti-RhoA Mouse Monoclonal Antibody

**Background:** Small GTPases are a super-family of cellular signaling regulators. RhoA belongs to the Rho sub-family of GTPases. Rho proteins play critical roles in many actin cytoskeleton-dependent processes including platelet aggregation, cell motility, contraction, and cytokinesis. It regulates the formation of stress fibers and focal adhesions in fibroblasts and Ca<sup>2+</sup> sensitivity of smooth muscle contraction.

**Immunogen:** Recombinant full length protein of RhoA.

**Tested applications:** ELISA, WB, IHC

**Recommended dilutions:**

ELISA 1:1000-1:5000

WB 1:1000-1:2000

**Concentration:** 1 mg/ml

**Host:** mouse

**Clonality:** Monoclonal

**Isotype:** IgG

**Purity:** Purified from ascites

**Format:** Liquid

**Storage buffer:**

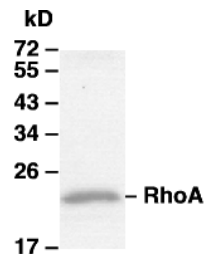
Preservative: no

Constituents: PBS (without Mg<sup>2+</sup> and Ca<sup>2+</sup>), pH 7.4, 150 mM NaCl, 50% glycerol

**Species Reactivity:** RhoA antibody recognizes RhoA from vertebrates.

**Storage Conditions:** Store at -20°C. Avoid freeze / thaw cycles

### Western blot:



**WB: anti-RhoA mAb**

Western blot analysis of RhoA proteins. MEF whole-cell lysate was used for western blot with the anti-RhoA mouse monoclonal antibody (Cat. # 26007).

**For research use only. Not for diagnostic or therapeutic applications.**