

## Active Rheb

**Catalog Number:** 26910

**Gene Symbol:** RHEB

**Description:** Anti-Active Rheb Mouse Monoclonal Antibody

**Background:** Small GTPases are a super-family of cellular signaling regulators. Rheb is a member of the Ras-superfamily GTPases. Rheb has been shown to interact with C-Raf, Mammalian target of rapamycin (mTOR), TSC2, Ataxia telangiectasia mutated (ATM), KIAA1303 and Ataxia telangiectasia and Rad3 related (ATR).

**Immunogen:** Recombinant full length protein of active Rheb.

**Tested applications:** IP, IHC

**Recommended dilutions:**

1 µg for 1~2 mg total cellular proteins for IP;

1:100 dilution for IHC

**Concentration:** 1 mg/ml

**Host:** mouse

**Clonality:** Monoclonal

**Isotype:** IgM

**Purity:** Purified from ascites

**Format:** Liquid

**Storage buffer:**

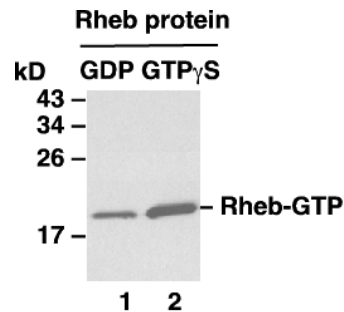
Preservative: no

Constituents: PBS (without Mg<sup>2+</sup> and Ca<sup>2+</sup>), pH 7.4, 150 mM NaCl, 50% glycerol

**Species Reactivity:** Anti-active Rheb antibody recognizes active Rheb of vertebrates.

**Storage Conditions:** Store at -20°C. Avoid freeze / thaw cycles

## Immunoprecipitation/Western blot



**IP:** anti-active Rheb mAb

**WB:** anti-Rheb pAb

Rheb activation assay. Purified Rheb proteins were immunoprecipitated after treated with GDP (lane 1) or GTP $\gamma$ S (lane 2). Immunoprecipitation was done with the anti-active Rheb monoclonal antibody (Cat. No. 26910). Immunoblot was with an anti-Rheb rabbit polyclonal antibody (Cat. No. 21098).

For research use only. Not for diagnostic or therapeutic applications.