

## GAPDH

**Catalog Number:** 21012

**Gene Symbol:** GAPDH

**Description:** Anti-GAPDH Rabbit Polyclonal Antibody

**Background:** Glyceraldehyde-3-phosphate dehydrogenase (GAPDH) catalyzes the reversible oxidative phosphorylation of glyceraldehyde-3-phosphate, an important energy-yielding step in carbohydrate metabolism. Additional functions of GAPDH include acting as a uricil DNA glycosylase, activating transcription, binding RNA and involvement in nuclear RNA export, DNA replication and DNA repair. Furthermore, expression of GAPDH is upregulated in liver, lung and prostate cancers. Moreover, GAPDH complexes with neuronal proteins implicated in human neuro-degenerative disorders including the  $\beta$ -Amyloid precursor, Huntingtin and other triplet repeat neuronal disorder proteins.

**Immunogen:** A synthetic peptide near the C-terminus of GAPDH of human origin

**Tested applications:** ELISA, WB, IHC

**Recommended dilutions:**

ELISA 1:1000-1:5000

WB 1:100-1:2000

IHC 1:50-1:100

**Concentration:** 0.2 mg/ml

**Host:** Rabbit

**Clonality:** Polyclonal

**Purity:** Purified from serum

**Format:** Liquid

**Storage buffer:**

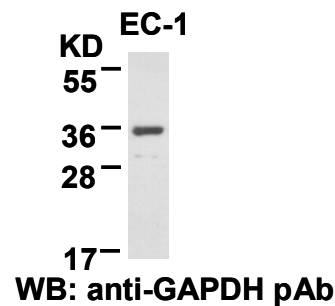
Preservative: no

Constituents: PBS (without  $Mg^{2+}$  and  $Ca^{2+}$ ), pH 7.4, 150 mM NaCl, 50% glycerol

**Species Reactivity:** Anti-GAPDH antibody recognizes GAPDH of vertebrates

**Storage Conditions:** Store at  $-20^{\circ}C$ . Avoid freeze / thaw cycles

### Western Blot:



EC-1 cell lysate was used for Western blot with anti-GAPDH polyclonal antibody (Cat # 21012).

For research use only. Not for diagnostic or therapeutic applications.