

β -Tubulin

Catalog Number: 21089

Gene Symbol: TUBB

Description: Anti- β -Tubulin Rabbit Polyclonal Antibody

Background: There are five members of the tubulin family (α , β , γ , δ , and ϵ). The most common members are α and β tubulins which form heterodimers as the basic structural unit of microtubules.

Immunogen: A synthetic peptide from the internal region of human β -tubulin protein

Tested applications: ELISA, WB, IHC, IP

Recommended dilutions:

ELISA 1:100-1:5000

WB 1:100-1:1000

IHC 1:50-1:100

Concentration: 0.2 mg/ml

Host: Rabbit

Clonality: Polyclonal

Purity: Purified from serum

Format: Liquid

Storage buffer:

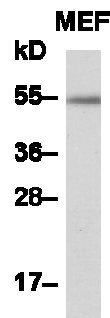
Preservative: no

Constituents: PBS (without Mg^{2+} and Ca^{2+}), pH 7.4, 150 mM NaCl, 50% glycerol

Species Reactivity: β -Tubulin antibody recognizes β -tubulin proteins from vertebrates.

Storage Conditions: Store at $-20^{\circ}C$. Avoid freeze / thaw cycles

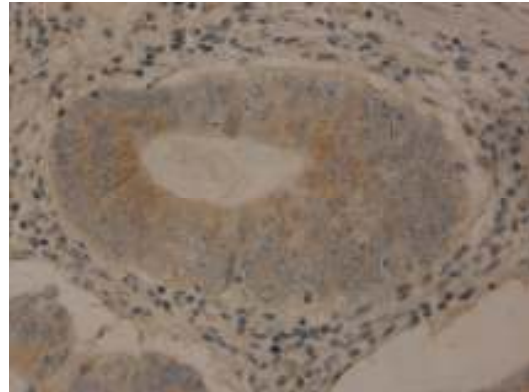
Western blot:



WB: anti-TUBB pAb

MEF whole-cell lysate was used for Western blot with anti- β -tubulin polyclonal antibody (Cat # 21089).

Immunohistochemistry:



Immunohistochemical staining of formalin-fixed paraffin-embedded colon carcinoma using the affinity purified anti β -tubulin polyclonal antibody (Cat# 21089) with a 1:50 dilution.

For research use only. Not for diagnostic or therapeutic applications.