

TP53

Catalog Number: 21270

Gene Symbol: TP53

Description: Anti-TP53 Rabbit Polyclonal Antibody

Background: TP53 belongs to the p53 proteins family. It is ubiquitously expressed, acts as a tumor suppressor in many tumor types and induces growth arrest or apoptosis depending on the physiological circumstances and cell type. Defects in TP53 are a cause of esophageal cancer (ESCR), lung cancer (LNCR), adrenocortical carcinoma (ADCC), choroid plexus papilloma (CPLPA) and so on.

Immunogen: A synthetic peptide from the internal region of TP53 protein, human origin.

Tested applications: ELISA, WB, IHC

Recommended dilutions:

ELISA 1:500-1:5000

WB 1:500-1:2000

IHC 1:50-200

Concentration: 0.2 mg/ml

Host: Rabbit

Clonality: Polyclonal

Purity: Purified from serum

Format: Liquid

Storage buffer:

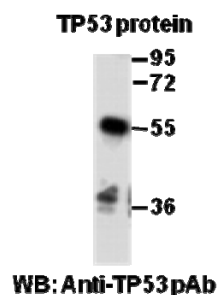
Preservative: no

Constituents: PBS (without Mg²⁺ and Ca²⁺), pH 7.4, 150 mM NaCl, 50% glycerol

Species Reactivity: Anti-TP53 rabbit polyclonal antibody recognizes TP53 from vertebrates.

Storage Conditions: Store at -20°C. Avoid freeze / thaw cycles

Western blot:



Western blot analysis of recombinant TP53 protein. Purified full length His-tagged TP53 protein was blotted with anti-TP53 rabbit polyclonal antibody (Cat. #21270).

For research use only. Not for diagnostic or therapeutic applications.