

ERBB2

Catalog Number: 21202

Gene Symbol: ERBB2, HER2, Neu

Description: Anti-ErbB2 Rabbit Polyclonal Antibody

Background: The ErbB family is composed of four plasma membrane-bound receptor tyrosine kinases. Amplification or over-expression of the ERBB2 gene occurs in approximately 30% of breast cancers. HER2 is encoded by ERBB2, a known proto-oncogene located at the long arm of human chromosome 17(17q21-q22). HER2 proteins have been shown to form clusters in cell membranes that may play a role in tumorigenesis.

Immunogen: A synthetic peptide from the central of ErbB2 protein.

Tested applications: ELISA, WB, IHC

Recommended dilutions:

ELISA 1:500-1:5000

WB 1:200-1:2000

IHC 1:20-1:200

Concentration: 0.2 mg/ml

Host: Rabbit

Clonality: Polyclonal

Purity: Purified from serum

Format: Liquid

Storage buffer:

Preservative: no

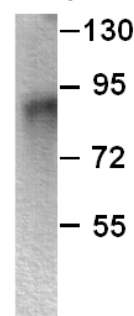
Constituents: PBS (without Mg²⁺ and Ca²⁺), pH 7.4, 150 mM NaCl, 50% glycerol

Species Reactivity: Recognizes ErbB2 of vertebrates.

Storage Conditions: Store at -20°C. Avoid freeze / thaw cycles

Western blot:

ERBB2 protein



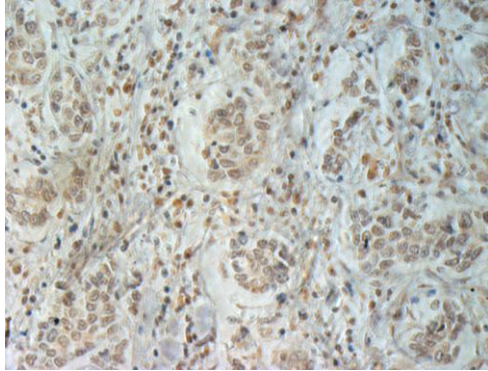
WB: Anti-ERBB2 pAb

Western blot analysis of ErbB2 protein.

Purified full length His-tagged ErbB2 protein (Cat. #10208) was blotted with anti-ErbB2 rabbit polyclonal antibody (Cat. #21202).

For research use only. Not for diagnostic or therapeutic applications.

Immunohistochemistry



Immunohistochemical analysis of paraffin-embedded human breast cancer tissue with anti-ERBB₂ polyclonal antibody (Cat. #21202). Tissue samples were fixed with formaldehyde and blocked with 1% serum for 15 min at 37 °C. Antigen retrieval was by heat mediation in citrate buffer (pH6). Samples were then incubated with primary antibody (1:50 dilution) overnight at 4°C. A HRP-conjugated Goat anti-Rabbit IgG (1:50) was used as secondary antibody.